



Education Pack
Key Stage 3

The following notes and activities have been developed specifically for use with children in Key Stage 3, aged 11- 14. These materials are suitable for mainstream classes, and can easily be differentiated for SEN pupils as well. They can be downloaded free for use before your visit, during your visit, or as follow up activities after your visit.

Contents

- 1) Notes on the History of the Bridge
- 2) Things to look out for during your visit - visit checklist
- 3) Activities
 - a) Timeline Activity
 - b) Advantages and Disadvantages Activity
 - c) Persuasion Activity
 - d) Evidence Activity
 - e) Creative Activity
- 4) Extras
 - Extra Activity Suggestions
 - Wordsearch
 - Quiz



The History of London Bridge

As far as anyone knows, the first London Bridge was built by the **Romans**, in about **55AD**. The northern shore of the river, between where St. Paul's Cathedral now stands, and where the Tower of London now stands, was perfect for a small military settlement, called **Londinium**. This first bridge the Romans built was a pontoon bridge. This is a type of bridge that floats on rafts, and can be put up very quickly. Later, the Romans rebuilt the bridge to be stronger and more permanent, with wooden posts going into the river bed to support the roadway.

The Romans left Britain in the 5th century and within the next hundred years large numbers of people from northern Europe, called the **Angles, Saxons and Jutes** settled in Eastern and Southern England. The old Roman city of London was settled by Saxons, and given the name **Lundenwic**. The Saxons used the old Roman crossing, and rebuilt the bridge several times. London Bridge was very important to the Saxon city. As well as being the easiest way from anyone coming from the south to enter the city, it also gave the city protection from being attacked by ships. This didn't always work, though. In 1014, the leader of the Viking army, **King Olav**, had his men tie ropes to the wooden posts of the bridge, and when they rowed away in their boats, they pulled it down!

By about 1170 it was costing too much to keep rebuilding the wooden bridge. A wooden bridge wears out very quickly, and it can also be burnt down. The bridge had burned down in 1135. So in the reign of **King Henry II**, in **1176**, they began to build a new bridge from stone. The man in charge was a priest called **Peter de Colechurch**.

Building anything as large as London Bridge out of stone took a very long time. Both King Henry II and Peter de Colechurch had died before it was completed in 1209. Today we would think it is very unusual to have buildings on the top of a bridge. In those days it was much more common. Henry II's son, **King John** decided that the money people paid to rent buildings on the bridge would be put away to use when the bridge needed to be repaired. There were houses, shops, and even a chapel on London Bridge. The chapel was dedicated to **St. Thomas a Becket**, who was actually a friend of the original builder, Peter de Colechurch.

The new London Bridge had **20 arches**. These were all different sizes, but all of them were fairly narrow. This meant that the water flowed through them very quickly, so going under London Bridge in a boat could be very dangerous. Many people were thrown out of their boats and drowned going under London Bridge. These arches weren't always looked after very well. King John's son, King **Henry III**, gave his wife **Queen Eleanor** all of the rents from the buildings on the Bridge. She did not spend them on the repairs, and so, in the **hard winter of 1281**, several arches of the bridge were washed away by a build up of ice. This is why children still sing

"London Bridge is Falling down

My Fair Lady. "The nursery rhyme is telling off Queen Eleanor for not looking after the bridge.

On top of the Bridge, there were buildings on either side of the road, and the street itself

was so narrow that there was not enough room for two carts to pass each other. It could take a person on foot over an hour to get from one end of the bridge to the other.

Despite this, London Bridge was a very important place. Whenever important visitors came to London they would often be taken across the Bridge in a great procession. About a third of the way along the bridge from the southern end there was **a drawbridge**, which could be raised to let ships with tall masts through. On the stone gateway above the drawbridge it was quite usual to display the heads of traitors, as a warning to show what would happen to people who made the king angry! The first person to have his head cut off, then stuck on a spike on London Bridge, in **1305** was a Scot called **William Wallace**.

Nearly a hundred years later, in **1390**, the Champion of England, **Sir John Wells**, had a famous joust against the Champion of Scotland, **Sir David Lindsay**. Lindsay won the joust by knocking Wells from his horse. He became very popular for jumping down from his horse, and making sure that Wells was alright until his attendants could get to him.

The narrow arches of the bridge meant that ice would form between them during the winter, and in very cold winters the whole of the River Thames where it flows through London would freeze over. This led to people holding **Frost Fairs** on the river.

The Bridge continued to act as a defence for the city of London. **In 1450 an actual battle took place** on the Bridge, between the citizens of London, and an army of rebels led by a man called **Jack Cade**. The battle raged along the Bridge Street for a whole day, and most of the night, but by the morning the rebels had run away.

Buildings were continually being repaired and replaced on the Bridge. Then, in **1549**, the **Chapel was demolished by the order of King Edward VI**, and the Drawbridge gate was soon demolished and replaced by **Nonesuch House**. This was an amazing building, made from wooden panels all held together by wooden pins. Although the bridge itself was built of stone, most of the buildings on it were wooden, and the Bridge suffered from two fires. It was very badly damaged in a **fire of 1633**, but not quite so badly damaged in the **Great Fire of London in 1666**.

Because the water flowed so quickly through the arches, **water wheels** were built in several of the arches on either end of the bridge, and these were used to pump water into houses in the city.

By 1758 many of the buildings on the Bridge were in a bad state, and the City decided that more people could cross the Bridge more safely if they demolished the houses. By **1760** the last man to live on the bridge, **William West**, moved out, and the last buildings were demolished. The two middle arches were knocked into one, to make it safer to cross underneath the bridge.

Once all the buildings were gone, a new rule was made so that everyone crossing the bridge had to keep to their left. This is why people in Britain always drive on the left hand side of the road - London Bridge is where this started!

The Bridge had been standing for over 600 years, and it was clear that it needed to be repaired too often, and couldn't carry enough people at one time. So a competition to design a new London Bridge was held, and the plan by **Sir John Rennie** was chosen.

People continued to use the old London Bridge while Rennie's Bridge was being built. Then, when it was opened in **1831**, about a hundred yards east of the old Bridge, they began to demolish Old London Bridge.

Although it was perfect for the amount of traffic in 1831, Rennie's Bridge was too crowded by 1900, and so it was widened in **1902**. However this only solved the problem for a while, and by the 1960s it was clear that a brand new bridge would have to be built. So the City of London came up with the bright idea of selling Rennie's Bridge. It was bought by an American businessman called **Robert P. McCullough**, who had it demolished piece by piece, transported to America, and then reassembled in the holiday resort of Lake Havasu, in the state of Arizona.

The new bridge was built while the Rennie Bridge was taken apart, and amazingly traffic was able to continue using the bridge while all the work was going on. Queen Elizabeth opened the new bridge on the 17th March 1973. It is still standing today.



Things to Look Out For during your Visit

Now that you have read a little bit about the history of the bridge, we can tell you some of the things that you could look out for during your visit. You could use the checklist on the next page to see if you've managed to do everything during your visit.

- * You know that the Romans built the first London Bridge. In one of our rooms you will be able to see some of the wood that the Romans used to build the city of Londinium 2000 years ago.
- * You can also see full size models of some of the bridges built by the Romans and the Saxons, and you'll actually be able to walk on these models, and meet the Romans, the Saxons and the Danes.
- * You will visit the Gatehouse, and meet the Keeper of the Heads, who will show you how to get the gory heads ready to put on the poles! You'll also meet William Wallace. You already know that his was the first head to be displayed on London Bridge. He himself will tell you his own sad story.
- * In the reception area Brownlow your guide will tell you more about the joust that took place on the Bridge in 1390
- * You know that buildings were built, demolished and replaced for almost 600 years on the bridge, and so it looked very different at different times. You will see many pictures showing you how the Bridge looked at these different times.
- * You know that Sir John Rennie won the competition to design and build the new bridge. Through the magic of computer technology you will actually get to meet Sir John!
- * You will meet a famous writer called Charles Dickens, who wrote many famous books, including "A Christmas Carol" and "Oliver Twist ". He will tell you why part of the Bridge, still standing today, is called "Nancy's Steps"
- * You know that Rennie's Bridge was demolished piece by piece and taken to Lake Havasu, Nevada. In a film, you'll meet Robert P. McCullough, the man who bought the Bridge, and he himself will tell you what happened.
- * Last, but not least, you know that the modern Bridge was opened by her Majesty Queen Elizabeth II in 1973. You will actually meet the Queen, who will talk to you about the Opening of The Bridge. Best behaviour please, and don't forget to bow or curtsy!



Visit Checklist

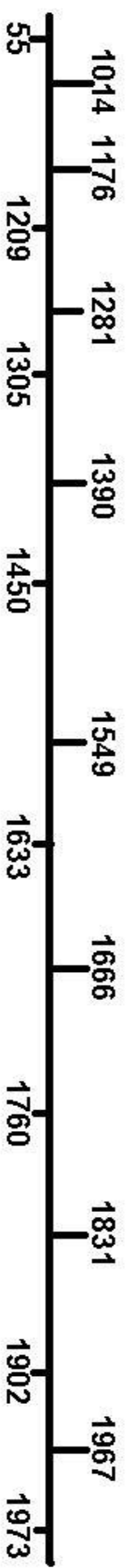
<i>During my visit did I?</i>	Yes	No
See the 2000 year old wood the Romans used to build Londinium?		
Walk on the models of the Bridge?		
Meet Romans, Saxons or Danes?		
Learn how to prepare the heads?		
Meet William Wallace?		
Learn more about the joust?		
See pictures showing what the bridge looked like at different times?		
Meet Sir John Rennie?		
Meet Charles Dickens and learn why part of the Bridge is called Nancy's Steps?		
Meet Robert McCullough and learn why he bought the Bridge?		
See the Queen, and learn what happened when she opened the Bridge?		



Activity A) Timeline

On the next page you will see a timeline. This gives you some of the most important dates in the history of London Bridge. All you have to do is to use the notes about the history of the Bridge, and write in what happened to the bridge in those years. You can write what happened either above or below each of the dates.

London Bridge Timeline





Activity B) Advantages and Disadvantages

In the 1170s King Henry II and the people of London took the decision to build a new London Bridge out of stone. All the other London Bridges had been made out of wood. On this page you have a list of statements. Half of them are about bridges made of wood. Half of them are about bridges made of stone.

On the next page you have two boxes. Put all the statements you think are about wooden bridges into the box headed "Wooden Bridges", and all of the others into the box headed "Stone Bridges ". So, the statement: -

These bridges last a long time

would go into the Stone Bridges box. You could either write the statements into the box, or cut out the statements and stick them into the box.

Statements

These bridges last a long time

These bridges can be burnt down easily

These bridges could be built quickly

These bridges take a long time to build

These bridges can rot away in water

You can build houses and shops on these bridges

These bridges are very heavy and need narrow arches

These bridges could be built on floating rafts

These bridges cannot carry heavy traffic

These bridges can carry heavy traffic

These bridges are cheap to build

These bridges are expensive to build

Wooden Bridges

Stone Bridges



Activity C) Persuasion Activity

You have to imagine that you are Peter de Colechurch. King Henry II has asked you to begin to make plans for a new London Bridge.

You know that a Bridge made of stone would be much better than a bridge made of wood.

You also know that the King will be worried that a stone bridge will be a lot more expensive than a wooden one. So you are going to have to persuade him!

Write him a letter, explaining why he should agree to let you build your new bridge out of stone. Remember, you have good reasons for wanting to build it out of stone, so make sure that you tell him what these reasons are!

You could write your letter at school, using a pc, or you could use the writing frame on the next page.



Activity D) - Evidence Activity

Evidence means the things we use to tell us about how things were in the past. Your teacher will have already told you about the difference between **primary** sources of evidence, and **secondary** sources of evidence.

Here is a list of different pieces of evidence that could tell us something about life on Old London Bridge: -

Pieces of wood from the old Roman Bridge

A diary written by someone who lived on the Old Bridge

A history book about London Bridge, written 5 years ago

A painting of the Bridge by an artist who actually lived on the Bridge

A CD of someone singing "London Bridge is Falling Down"

A TV documentary about Old London Bridge

Look at the list, and then answer the questions

1) Write down TWO items from the list that are examples of Primary Evidence: -

2) Write down TWO items from the list that are examples of Secondary Evidence:-

3) Which TWO items from the list do you think would tell you most about what life was like on Old London Bridge?

4) Now explain why you think those two pieces of evidence would tell you most about life on Old London Bridge



Activity E) Creative Activity

Imagine that it is 1967, and you are a member of the Corporation of London. You have taken the decision to build a new London Bridge. You would like to sell Rennie's Bridge, so you have to design a poster, advertising it for sale.

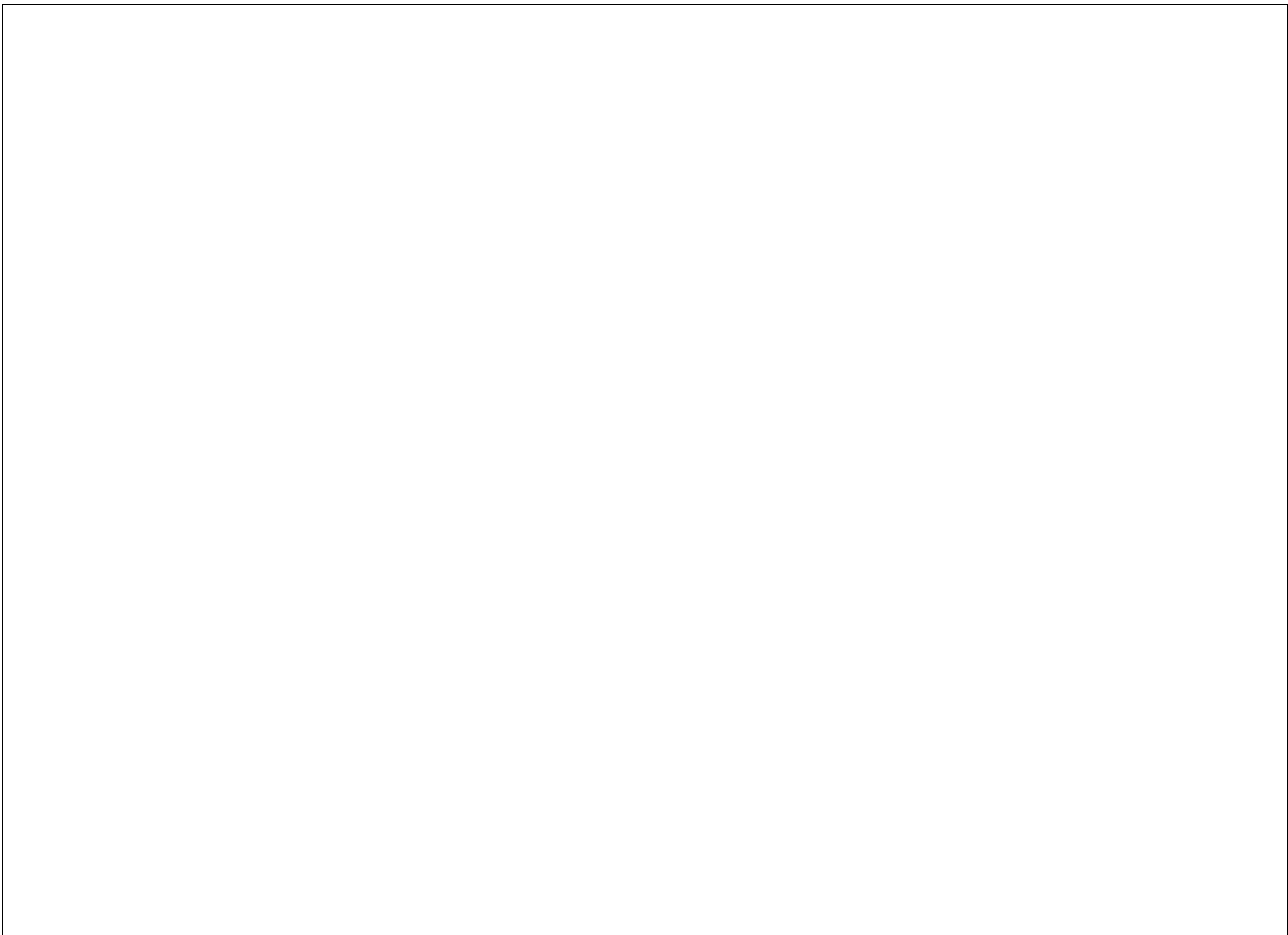
You could either do this on your own PCs at school, or use the form on the next page.

Here is a list of facts about Rennie's Bridge that you could use.

<i>When was it built?</i>	<i>The first stone was laid in 1825, and it was opened in 1831</i>
Who designed it?	Sir John Rennie
How big is it?	928 feet long - 49 feet wide
What was it built out of?	Granite
How much did it cost to build?	£2.5 million
Who opened the Bridge?	King William IV
How many arches does it have?	5
Why are we selling it?	Because its too narrow to cope with the amount of traffic that crosses it every day

For Sale

Sir John Rennie's World Famous London Bridge





Extras

Extra Activity Ideas

Empathy Activities

Ask pupils to write a series of short diary entries throughout the history of the Bridge - imagining they are people whose lives were affected by the Bridge - e.g. -

- * A roman soldier who has helped build the first pontoon bridge
- * A Viking sailor who helped pull the bridge down
- * Someone crossing into London over the bridge for the first time, and seeing the head of William Wallace on the Drawbridge Gate
- * An eyewitness who saw the great joust of 1390
- * William West, the last person ever to live on the Bridge, on how he felt the day he moved out.
- * Sir John Rennie on the day that he had to present your plans to the committee who would decide what the new bridge will be like

Ask pupils to write a front page newspaper report about a significant event in the history of the Bridge - e.g. -

King Henry Decides the New Bridge shall be made of Stone

Lindsay Defeats Wells in Epic Contest

Battle on the Bridge - Citizens One - Rebels Nil

Design Ideas

* Pupils could make their own design for a new London Bridge to replace the present one. This could be presented to the whole class via a PowerPoint presentation.

* Pupils could design either: -

A poster to advertise The London Bridge Experience
or

A front cover for a book all about the history of London Bridge.

Discussion Ideas

* Role play. Hot seating activity. Ask pupils to take it in turns playing the role of William Wallace, and discussing how they feel they have been treated.

* Formal debate - Wooden Bridge v. Stone Bridge.



Wordsearch

Try to find all of these words within the grid

C	H	A	P	E	L	W	N	H	O	J	G	N	I	K
D	R	A	W	B	R	I	D	G	E	L	L	S	B	R
B	R	I	D	G	E	L	L	O	N	D	O	N	I	A
F	A	L	L	I	N	G	D	O	W	N	D	E	A	R
L	O	D	N	A	N	W	I	S	G	N	I	K	I	V
F	M	Y	F	A	I	R	L	A	D	Y	Y	C	R	O
L	O	C	N	I	E	L	O	N	D	I	N	I	U	M
W	I	I	I	L	R	L	L	M	I	A	M	D	W	A
L	L	W	A	T	C	E	I	H	A	V	A	S	U	T
H	A	N	V	A	Y	S	U	I	N	N	A	E	Z	H
J	H	E	N	R	Y	I	I	O	N	X	S	L	N	E
K	I	D	N	G	J	E	H	N	O	F	I	R	Y	A
P	O	N	T	U	S	I	K	N	S	U	R	A	L	D
C	H	U	R	L	E	S	S	A	D	I	C	H	E	S
W	I	L	L	I	A	M	W	A	L	L	A	C	E	S

Romans	William Wallace	Londinium	Saxons	Vikings
Lundenwic	Henry II	King John	chapel	Fire
drawbridge	Charles Dickens	Rennie	City	
Falling Down	My Fair Lady	Lake Havasu		
London	Bridge	heads		



Bridge Quiz

How much do you actually remember from your visit? Try our London Bridge Quiz. All of the answers are either in the notes, or have been given to you during your visit. Don't worry - you won't end up like William Wallace if you get a few wrong!

- 1) When did the Romans build the very first London Bridge?
- 2) Why did they build a pontoon bridge first of all?
- 3) What did the Romans call London?
- 4) Who pulled the Bridge down in 1014, and how did they do it?
- 5) Who was the king when they started building the Bridge in 1176? Who was king when they finished it?
- 6) Who designed and built the first stone bridge?
- 7) During its 600 years, the old bridge had several famous buildings on it. Name two of them.
- 8) Whose head was the first to be displayed on London Bridge?
- 9) What did they have to do to get heads ready to display them on London Bridge?
- 10) What famous event took place on the Bridge in 1390?
- 11) What change happened on the Bridge in 1760?
- 12) Who was the Fair Lady in the song "London Bridge is Falling Down"?
- 13) Who won the competition to design and build the new London Bridge in 1831?
- 14) 'Nancy's Steps' get their name from which book by Charles Dickens?
- 15) Who opened the new London Bridge in 1973?

Answers on the next page



Answers

- 1) *About 55 AD*
- 2) *Because it was a very quick way of building a bridge*
- 3) *Londinium*
- 4) *King Olav and the Vikings. They tied the posts to their ships, then rowed away, pulling down the posts that held up the Bridge*
- 5) *Henry II and then King John*
- 6) *Peter de Colechurch*
- 7) *The Drawbridge Gate - The Chapel of St. Thomas A Becket - The Great Stone Gate - Nonesuch House*
- 8) *William Wallace*
- 9) *They had to boil them, coat them in tar, and put a crown of ivy on top*
- 10) *The joust between Sir John Wells and Sir David Lindsay*
- 11) *The buildings were all demolished*
- 12) *Queen Eleanor*
- 13) *Sir John Rennie*
- 14) *Oliver Twist*
- 15) *Queen Elizabeth II*

So - how did you do?



We really hope that you enjoyed your visit to the London Bridge Experience, and hope to see you again soon.